



SOMMET CHÂÎNE MONDIALE
D'APPROVISIONNEMENT
GLOBAL SUPPLY CHAIN SUMMIT
aérospatiale / aerospace

SIEMENS
Ingenuity for life

MindSphere and Atos Codex

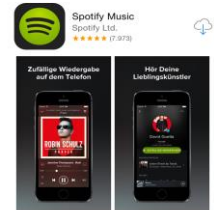
The cloud-based, open IoT operating system

Your way to digital services

Unrestricted © Siemens AG 2017

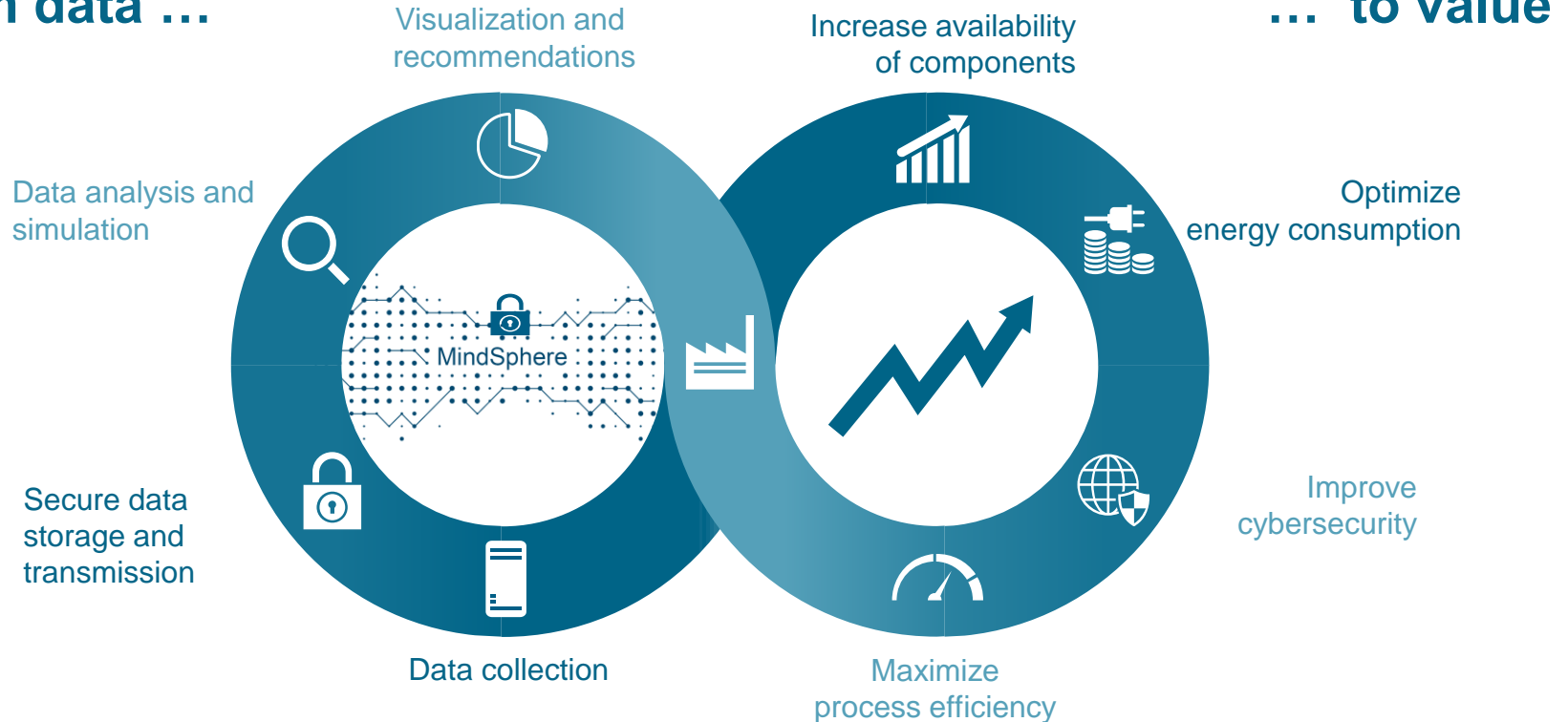
siemens.com/mindsphere

New business models in the internet age are disrupting complete markets



Extract value from data

From data ...



MindSphere is your entry point to drive performance with digitalization

Increase Performance

...

...powered by digital transformation



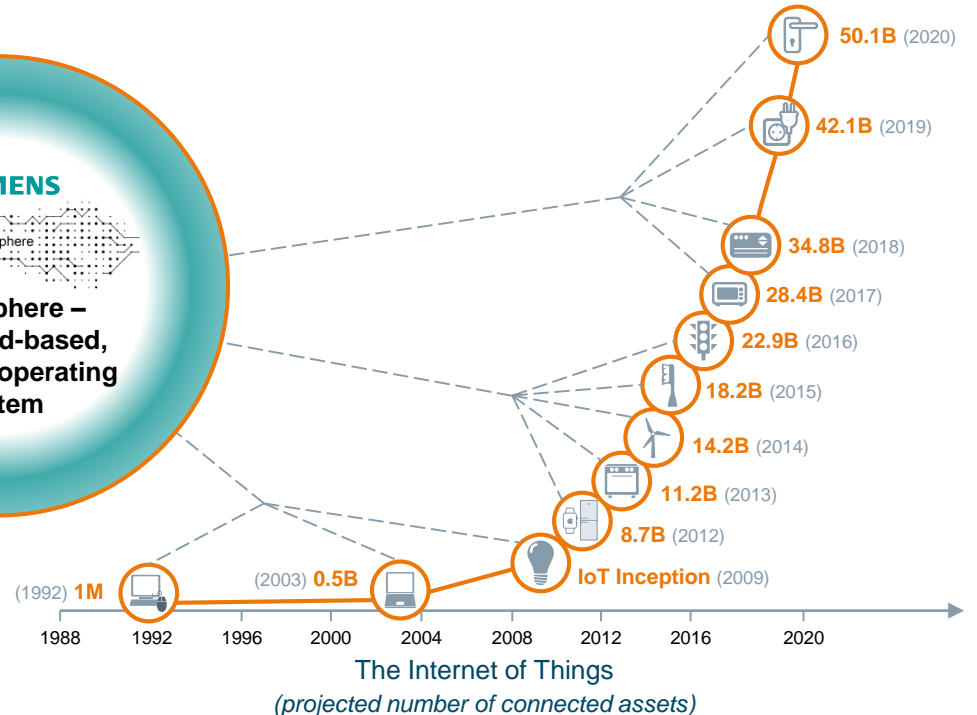
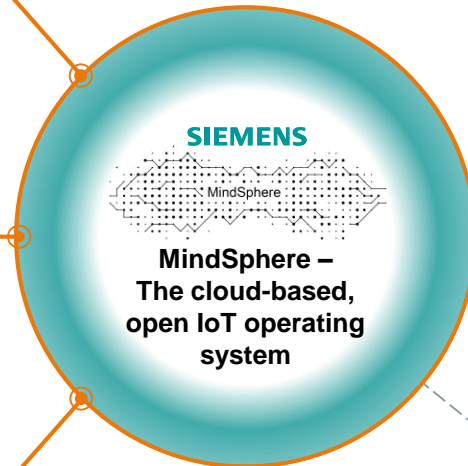
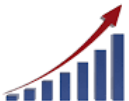
Build Digital Business ...

...through development of applications & digital services

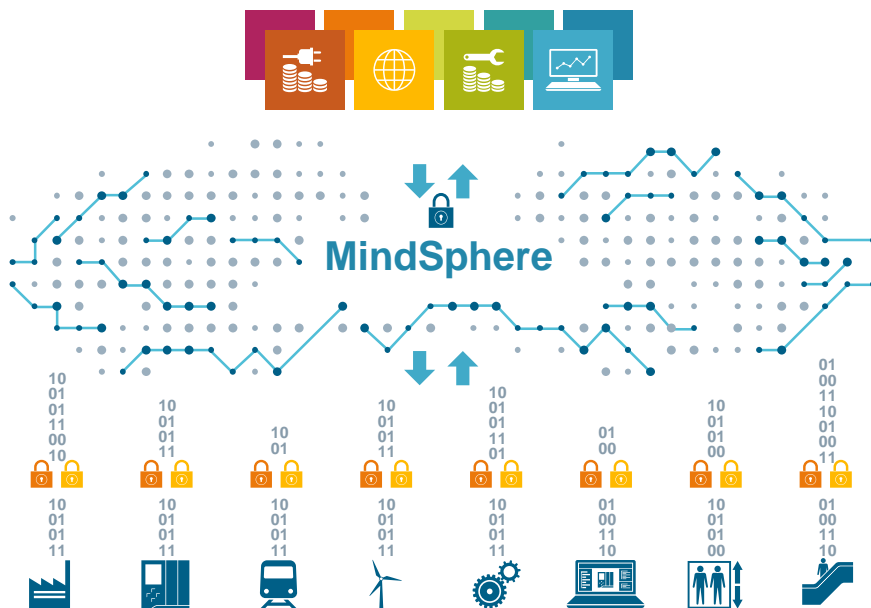


Understand the Market ...

...through new service and business models



MindSphere – The cloud-based, open IoT operating system from Siemens



MindApps

- Use **apps** from Siemens, partners or develop own apps
- Gain **asset transparency & analytical insights**
- Subscription based

MindSphere

- Open interface for development of **customer specific apps**
- **Various cloud infrastructures: SAP, AtoS, Microsoft Azure** offered as public, private or on-premise (planned)

MindConnect

- **Open standards** for connectivity, e.g., OPC UA
- **Plug and play connection** of Siemens and 3rd party products
- **Secure and encrypted** data communication

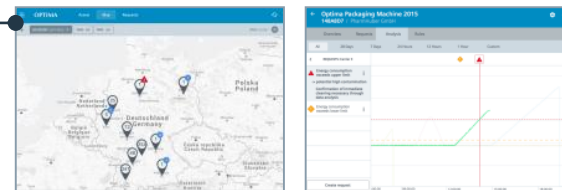
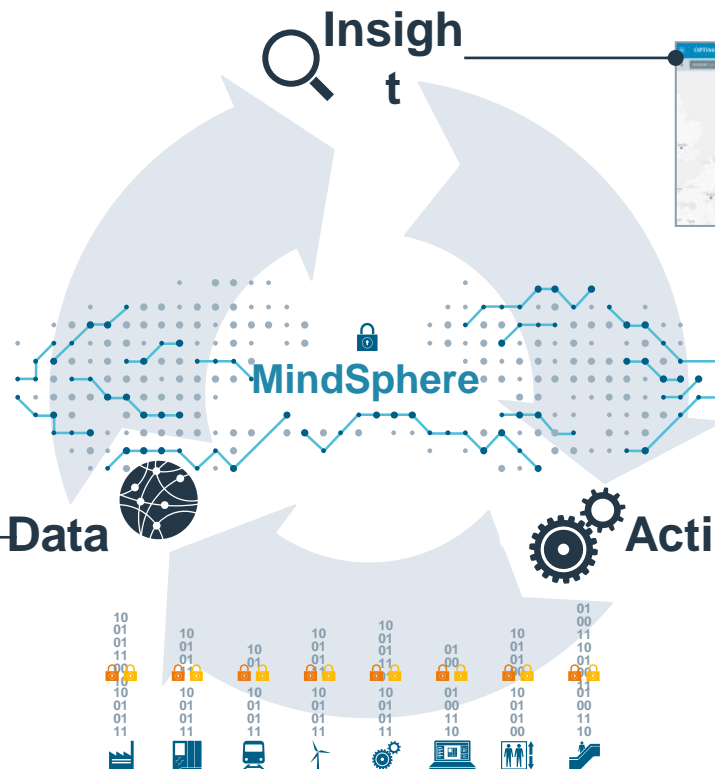
Data-driven services based on MindSphere enable new business

MindSphere – The cloud-based, open IoT operating system

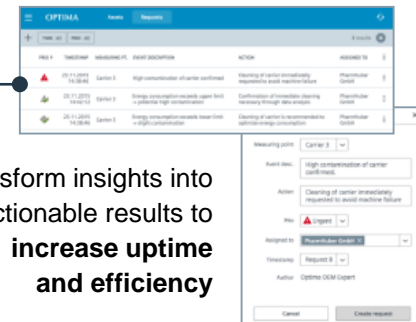
Virtual World
Real World



Configure data collection as well as connectivity quickly and easily



Gain immediate **insights** on whole fleet as well as individual assets using own, Siemens or partner apps



Transform insights into actionable results to **increase uptime and efficiency**

MindSphere APIs – scalable application and connectivity development



MindApps API Characteristics:

- **Application Programming Interface (API)** of MindSphere for development of customer owned analytical apps (MindApps)
- Optimized for **industrial IoT App development** with additional reusable supporting modules (e.g. parsing , analytics and visualization modules)
- Upcoming MindSphere **App Store** will provide ready to use Applications

MindConnect Characteristics:

- Dedicated IoT Gateways with **MindConnect Nano** and **MindConnect IoT 2000**
- MindConnect **embedded** in standard Siemens industrial products also with engineering via TIA Portal (v14), with e.g. SIMATIC, Sinumerik
- Upcoming **MindConnect Software** and **APIs** for own integration into assets / devices



Strong open ecosystem emerging around MindSphere, opening new opportunities for our customers and partners



SIEMENS

Exemplary Set of Partners

Consulting / strategy

McKinsey&Company



accenture
High performance. Delivered.

Technology Provider



accenture
High performance. Delivered.



Application Developer



sensEye



accenture
High performance. Delivered.

IaaS Provider



Atos

System Integrator

accenture
High performance. Delivered.

Atos

OMNETRIC Group
A Siemens & Accenture Company

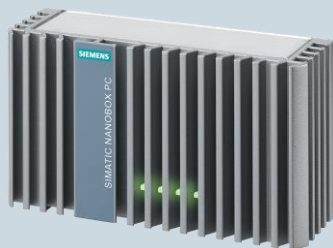
Connectivity Developer



MindSphere / Codex enables a quick, easy and secure start into data-driven services

STEP 1 Connect

Get MindSphere user-account, receive and integrate your MindConnect element into your machine/equipment



STEP 2 Configure

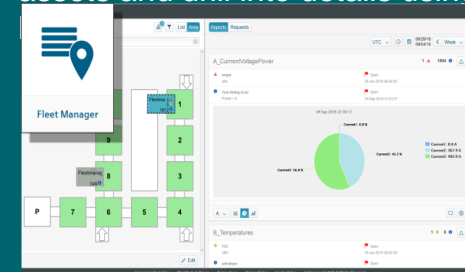
Configure data acquisition, connectivity and Visual Analyzer via MindSphere



YouTube Asset Configuration on MindSphere - experience how easy it. [Click here](#)

STEP 3 Run the Service

Monitor e.g. health status of all assets and drill into details using



Atos Codex - supporting our customer's journey to data centric business

1. Methodology & Data Science - Ideator

Agile analytics consulting and Proof-of-Value sprints to transform data into profitable insights

2. Customer design labs (FabLabs)

Accelerators, templated solutions and fast incubation services to develop at start-up speed

5. Industrialize best practices and use cases

Ready to deploy use cases to build best-in-class business solutions

3. Open industrial analytic platform

As a service, on premise and BPO platforms to boost analytics agility & TCO fully embedded with our IOT solutions-

canopy
the atos cloud

Bull
atos technologies

worldline
e-payment services

4. High-Performance Data Analytics

Open Exascale-class supercomputing and appliances to provide exceptional outcomes



5 Steps from Discovery to Actionable Information

Key Challenges and Core Competences

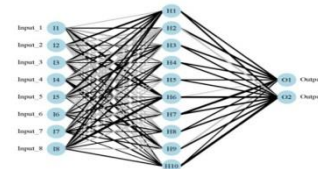
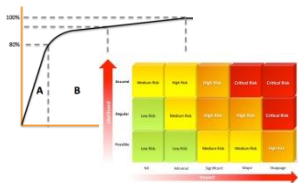
1 Problem & Opportunity Discovery

2 Data Creation & Mechanical Detection

3 Data Collection /Data Storing

4 Turn data into Business Value

5 Turn Business Value into actionable Information



Challenges

- Where are the key levers with direct impact on bottom-line?
- How to prioritize?
- Where to start?

- What parameters are available and needed?
- How can I detect parameters and create new data sources?

- How can data sources be accessed?
- How to perform data ingestion?
- What is the right IT Technology?
- How to store data?

- What are the right statistical techniques?
- What are the right algorithms and models?
- How to visually present the result?

- How can the information be inserted into processes?
- How can new micro applications be delivered?

Competences

- Subject Matter Expert
- Process Expert
- Business Consultant

- Subject Matter Expert
- Mechanical / Electrical Engineer

- Data Engineer
- Analytics Architect

- Data Scientist / Mathematician
- Analytics Engineer
- GUI Expert

- Process Expert
- Subject Matter Expert
- Apps Developer

MindSphere / Codex applied already with business case success stories

Major soft drink producer

Machine monitoring

- **Affordable IoT solution** for **predictive maintenance** of 150 motors
- **Increased asset uptime** through accurate failure prediction
- Global **accessibility of data**



Multinational steel company

Motor fleet management

- **Low-cost solution** for **monitoring of motor fleet**
- **Reduced downtime** in all motor applications
- **Visualization** of motor fleet



Major international airport

Failure prediction for baggage system

- Identification of all potential **failures in baggage trail**
- **On-time maintenance of defective baggage carts**
- Visualization of **system failures**

